

Please work on the bellwork paper. Also have your homework on your desk.

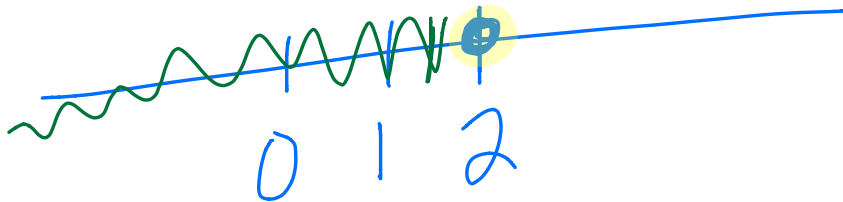
$$\textcircled{3} \quad \frac{4 - 2.6}{0.7} - 2(2.6 - 1.9)$$

$$\frac{1.4}{0.7} - 2(0.7)$$

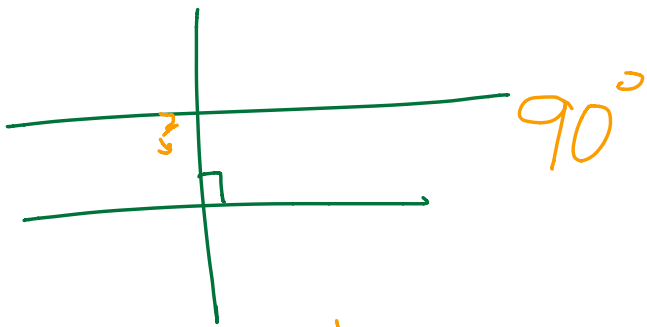
$$2 - 1.4$$

$$0.6 \quad \textcircled{C}$$

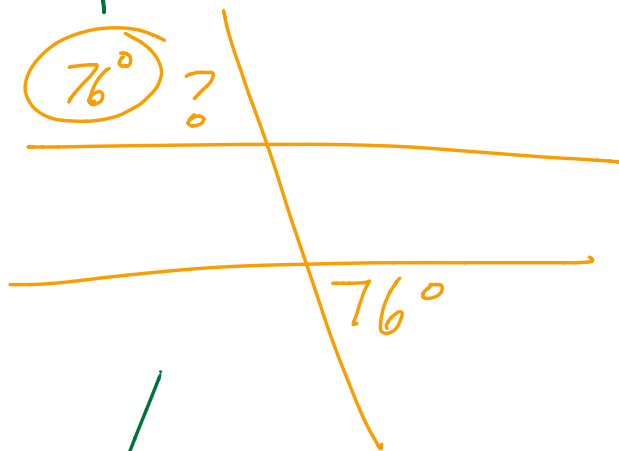
$$\textcircled{4} \quad x = 2$$



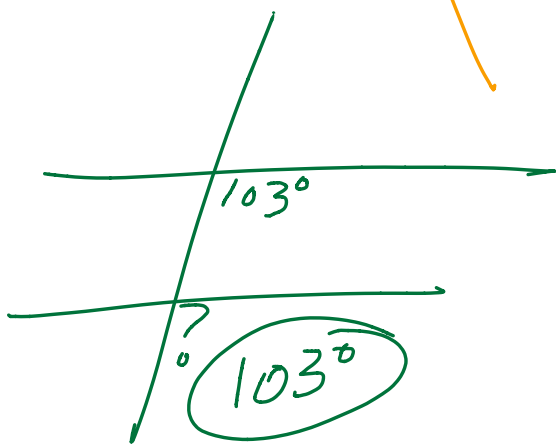
5



6

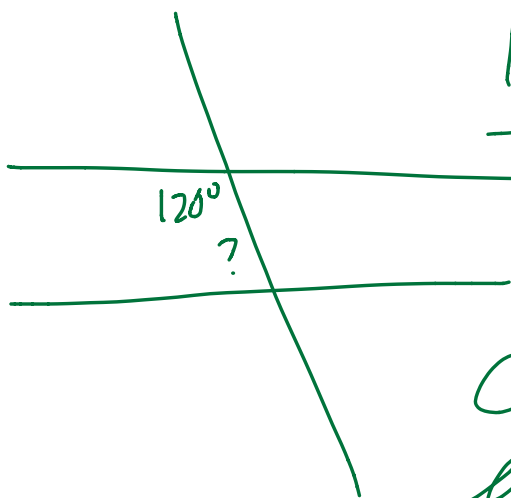


7



corresp.

8

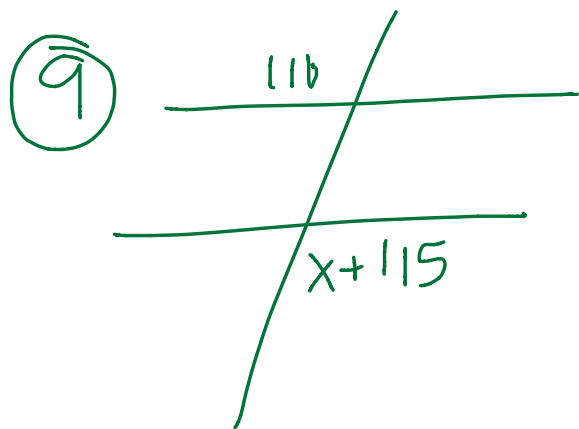


$$120 + ? = 180$$

$$-120 \quad -120$$

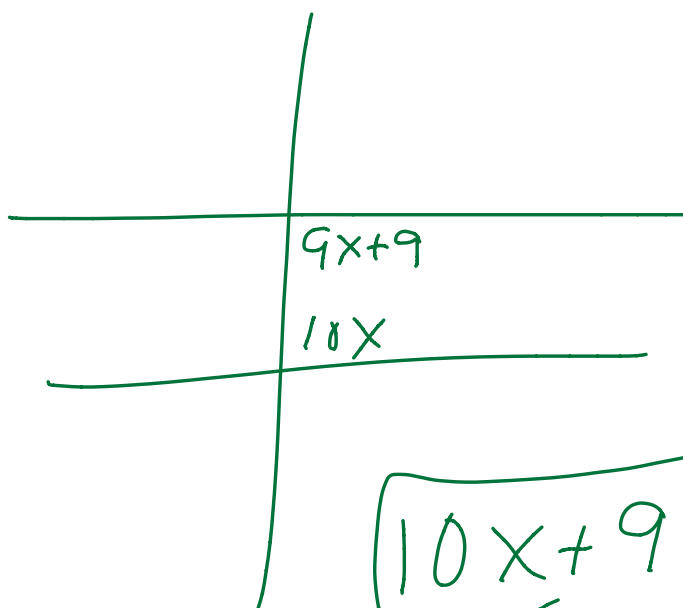
$$? = 60^\circ$$

consecutive interior



Alternate Exterior

$$\begin{array}{r}
 110 = x + 115 \\
 -115 \quad -115 \\
 \hline
 -5 = x
 \end{array}$$



CONS. inter

$$\begin{array}{r}
 10x + 9x + 9 = 180 \\
 -9 \quad -9
 \end{array}$$

$$\begin{array}{r}
 19x = 171 \\
 \overline{19} \quad \overline{19}
 \end{array}$$

$$x = 9$$

11

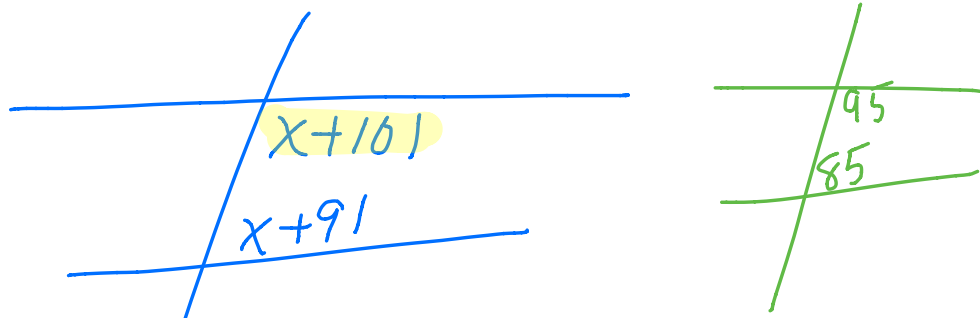
$$\begin{array}{r} 4+7x \\ -4+8x \\ \hline \end{array}$$

$$\begin{array}{r} -4+8x = 4+7x \\ +4 \qquad \qquad +4 \\ \hline \end{array}$$

$$\begin{array}{r} 8x = 8+7x \\ -7x \qquad \qquad -7x \\ \hline \end{array}$$

$$x = 8$$

17



$$\underline{x+101} + \underline{x+91} = 180$$

$$2x + 192 = 180$$
$$\underline{-192 \quad -192}$$

$$2x = -12$$

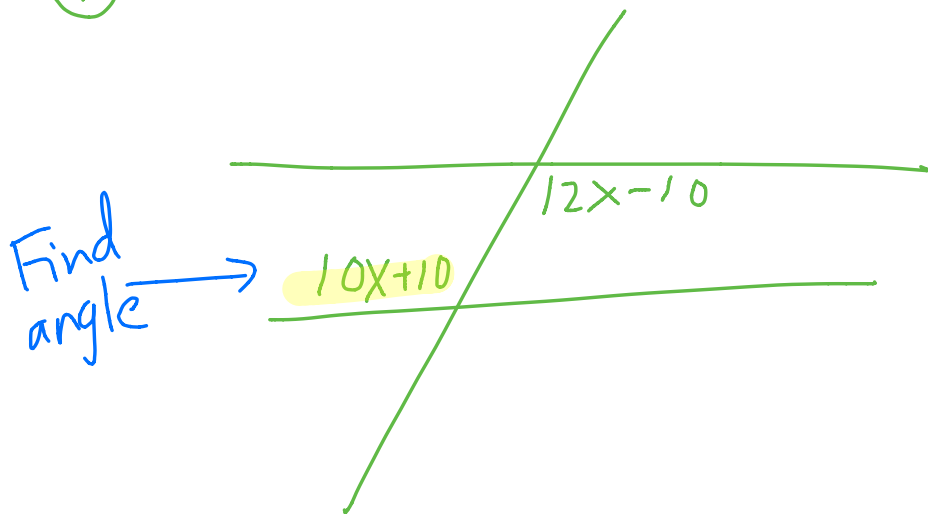
$$x = -6$$

Plug back in to find angle:

$$-6 + 101$$

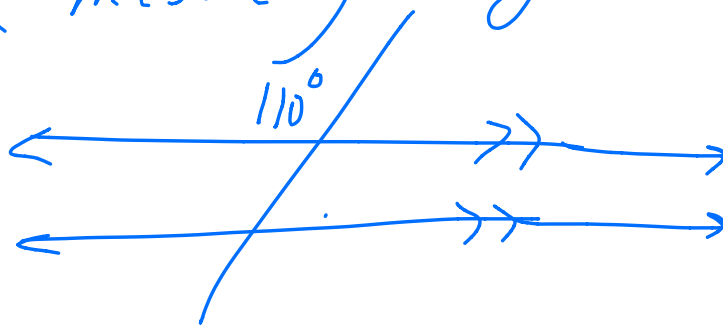
95°

① Work out #16



② List the FIVE PARTS of a box & whisker plot.

③ Copy this diagram and fill in all missing angle measures.



$$\textcircled{12} \quad x = 8$$

$$\textcircled{13} \quad x = 8$$

$$\textcircled{14} \quad x = 4$$

$$\textcircled{15} \quad 110^\circ$$

$$\textcircled{18} \quad 110^\circ$$

$$\textcircled{19} \quad 50^\circ$$

$$\textcircled{20} \quad 100^\circ$$

$$\textcircled{21} \quad \frac{1}{9}$$

$$\textcircled{22} \quad \frac{-16}{11}$$

$$\textcircled{23} \quad \frac{9}{-11}$$

$$\textcircled{24} \quad \frac{31}{8}$$