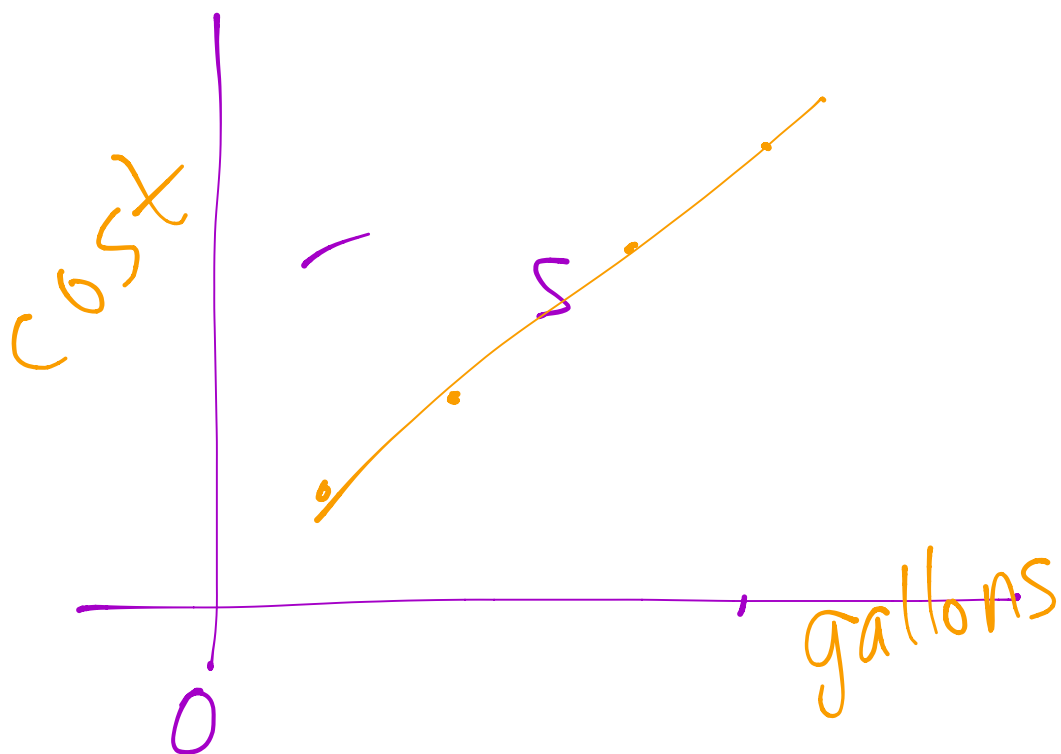


Bellwork:

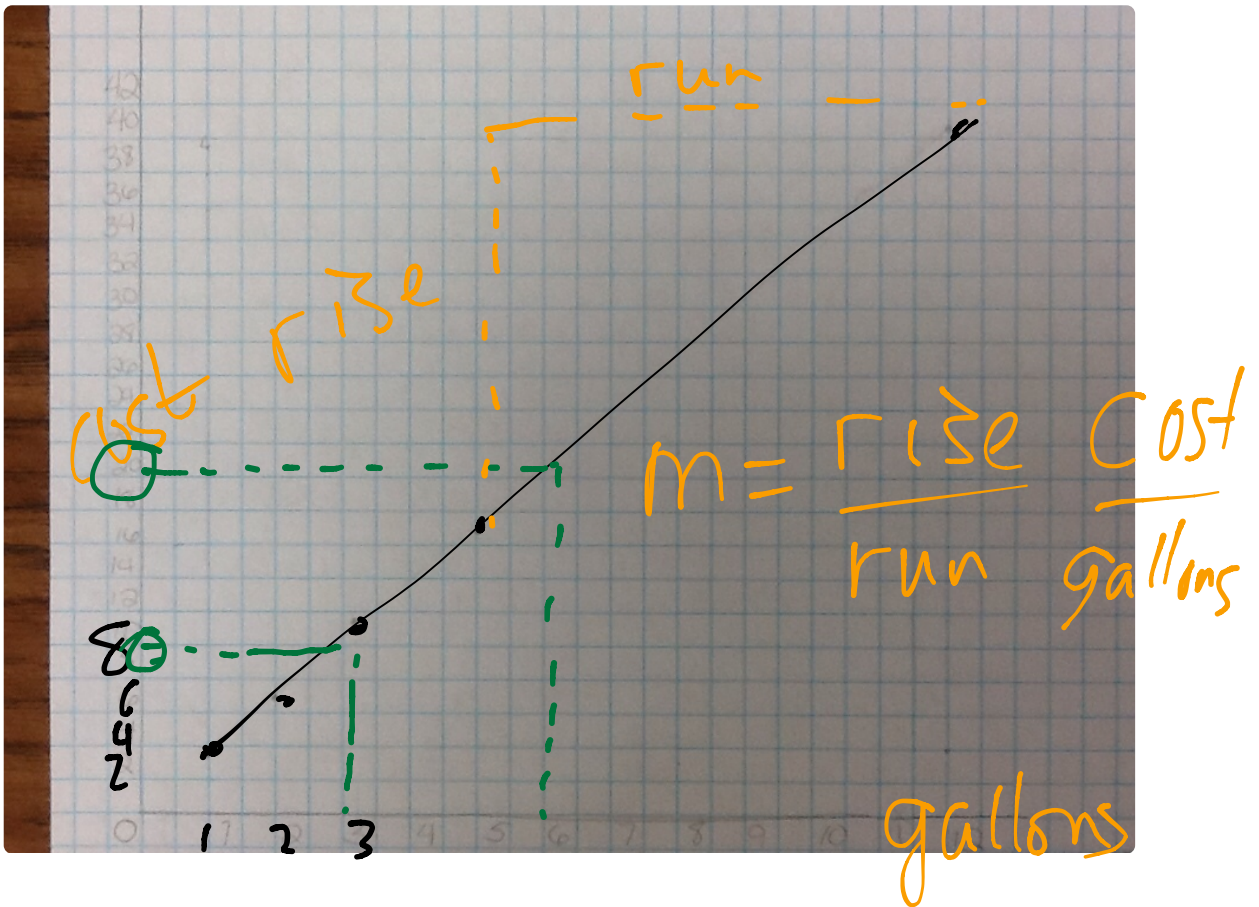
On graph paper, plot the following points.

	A	B	C	D	E
x, gallons	1	2	3.5	5	12
y, cost	3.34	6.68	11.69	16.7	40.08

Think about how to create the xy-axis before you plot the points.

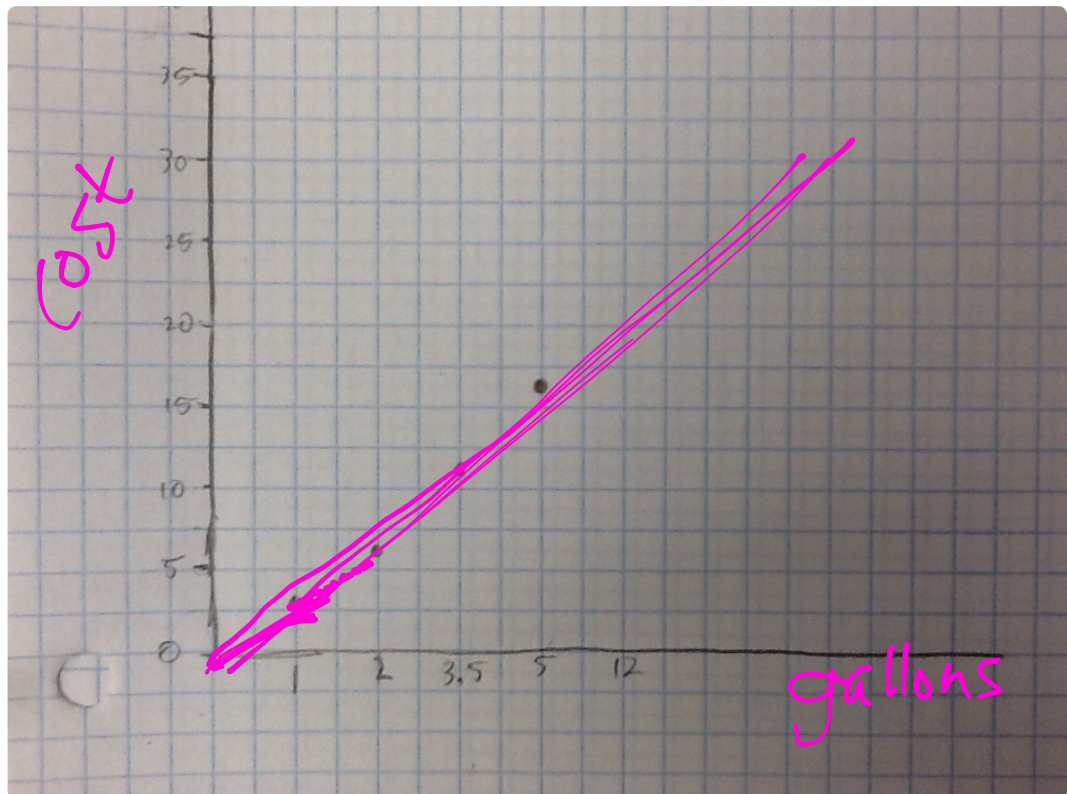


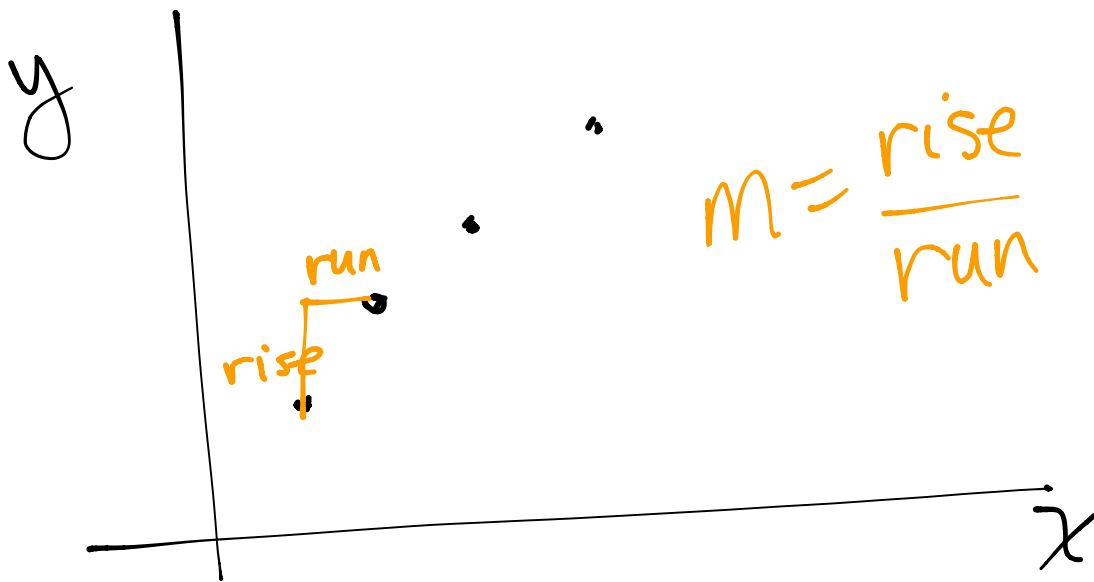
$$m = \frac{y_2 - y_1}{x_2 - x_1}$$



Linear or

3.39⁹





$$m = \frac{y_2 - y_1}{x_2 - x_1}$$

$$(x_1, y_1)$$
$$(1, 3.34)$$

$$(x_2, y_2)$$
$$(2, 6.68)$$

$$m = \frac{6.68 - 3.34}{2 - 1} = \frac{3.34}{1}$$
$$= 3.34$$



Open note quiz

① Calculate slope

$$(-3, 7) \quad (10, -11)$$

② Calculate slope

x	1	3	7	10
y	4	8	16	22

HW: 1-8 on worksheet