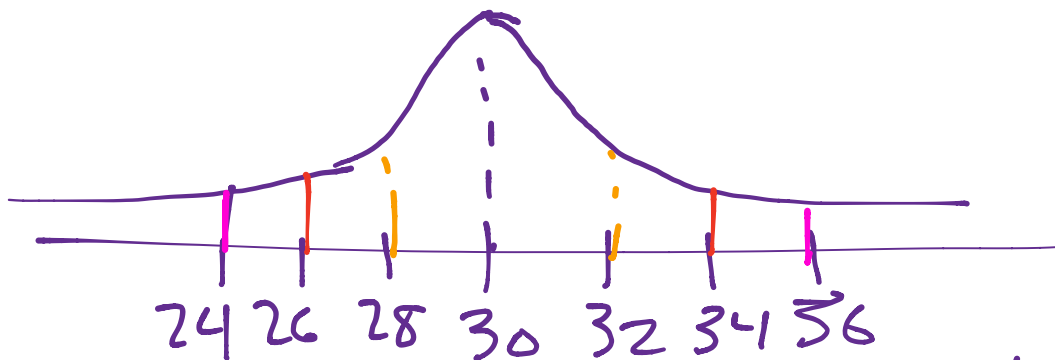


Sketch and label a normal distribution with a mean of 30 and standard deviation of 2. Show the Empirical Rule cut-offs.

Percentiles \rightarrow whole #'s

$$\frac{x - \text{mean}}{\text{stdev.}}$$



68% of data lies b/n. 28 & 32.

95% of data lies b/n. 26 & 34.

99.7% of data 24 & 36.

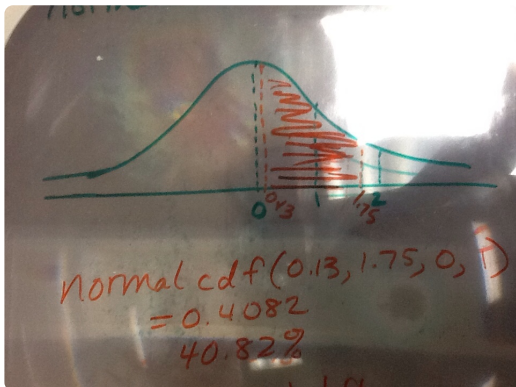
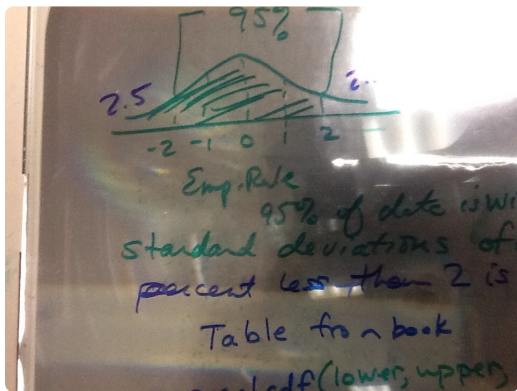
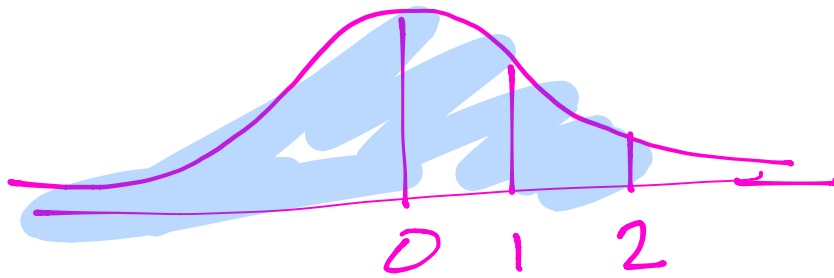


Table A Standard Normal probabilities (cont)

z	.00	.01	.02	.03	.04	.05
0.0	.5000	.5040	.5080	.5120	.5160	.5199
0.1	.5398	.5438	.5478	.5517	.5557	.5596
0.2	.5793	.5832	.5871	.5910	.5948	.5987
0.3	.6179	.6217	.6255	.6293	.6331	.6368
0.4	.6554	.6591	.6628	.6664	.6700	.6736
0.5	.6915	.6950	.6985	.7019	.7054	.7088
0.6	.7257	.7291	.7324	.7357	.7389	.7422
0.7	.7580	.7611	.7642	.7673	.7704	.7734
0.8	.7881	.7910	.7939	.7967	.7995	.8023
0.9	.8159	.8186	.8212	.8238	.8264	.8289
1.0	.8413	.8438	.8461	.8485	.8508	.8531
1.1	.8643	.8665	.8686	.8708	.8729	.8749
1.2	.8849	.8869	.8888	.8907	.8925	.8944
1.3	.9032	.9049	.9066	.9082	.9099	.9115
1.4	.9192	.9207	.9222	.9236	.9251	.9265